



Big Foot – Flat Roof PV Mounting System

Big Foot is a flat roof PV mounting system that is easy to install and maximizes power production. The use of a patent-pending, interlocking module-inverter-rack mounting structure allows for minimal blasting or roof penetrations. The horizontal cross tubing connects the modules to the rack structure on a slight tilt that allows the panels to ventilate and maximize power output. Big Foot mounting structures are made of long-lasting, heavy-duty aluminum and industrial-grade, coated or stainless steel.

Big Foot is the ideal, simple and cost-effective solution for the owner, architect and planner who demands functionality and power production out of a roofing system. The system is simple & easy to assemble & install which makes the project affordable for the owner & a pleasure for the contractor.

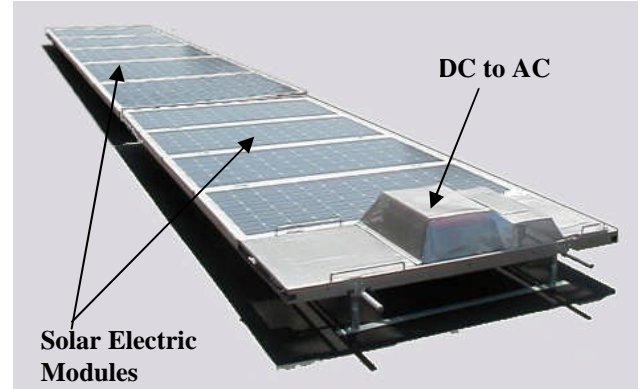


BIG FOOT: Maximizing Sun Power

- Higher energy production: Facing the sun and tilting the array 5° generates up to 4% more energy than a flat array.
- Cooler temperatures: The tilt allows natural convection to cool the array. This improves efficiency & lengthens the equipment's operating life.
- Cleaner Module Glass: Tilted modules allow drainage & no sediment deposits

on the modules thus providing better energy efficiency.

Power Production Potential



Each 100 ft.² of roof space will accommodate 1 kW_p of installed Big Foot capacity. In the U.S., an average annual yield of 1,250 – 1,750 kWh of electricity.

Wiring Systems (Patent Pending)

The Big Foot PV wiring system is a simple plug together system, pre-manufactured and requiring no Installation tools. This remarkable system is extremely safe and does not require a certified electrician to make rooftop connections.

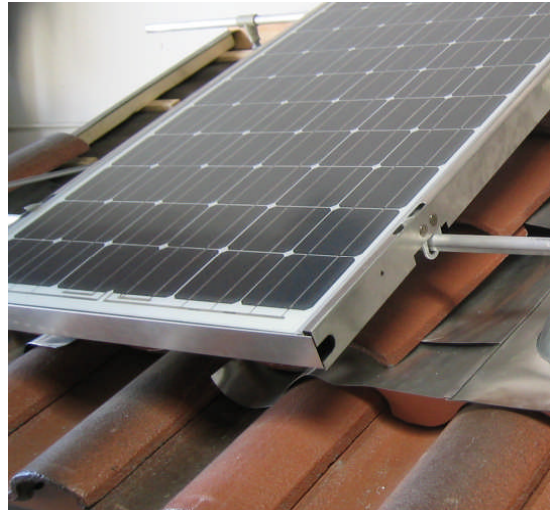
To comply with local building codes, each Big Foot module uses an internal wire raceway providing ease of installation and an aesthetically pleasing appearance.

WHY THE BIG FOOT PV MOUNTING SYSTEM:

Fast to Install	2 men, 20 Minutes/kW
Easy to Install	No special labor needed. (Except main breaker)
Big Foot = Light Weight	4 lbs. per square foot on the roof
Easy mount mechanical & electrical systems.	Module is mechanically-secured & then connected electrically.
Plug & Play Components	Pre-manufactured Cables & Wires



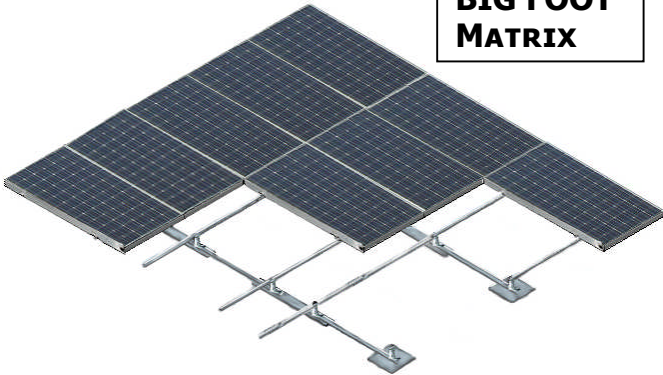
BIG FOOT RACK SYSTEM



BIG FOOT MODULE-TO-RACK MOUNTING

**INSTALL MANUAL AVAILABLE UPON REQUEST.
CALL US FOR PRICING & DEALER INFO.**

BIG FOOT MATRIX



**VISIT OUR WEBSITE @
WWW.ATLANTISPV.COM**

**INTERNATIONAL SALES (OUTSIDE U.K.):
WORLD TECHNOLOGY CORP
PETER TIERNEY
NYC, NY USA
646-775-4976**

WHY BIG FOOT?

	Big Foot	Competition
Product – Solar electric package system		
Self-cleaning module	Yes	No
Large module (over 20 sq.ft.)	Yes	No
No installation tools required	Yes	No
One roof penetration	Yes	No
Can be installed with any conventional roofing material	Yes	No
No special electrical education needed	Yes	No
No special roofing education needed	Yes	No
All connectors and wires are pre-manufactured	Yes	No
All connections are hidden	Yes	No
Easy for system disassembly	Yes	No

SALES OFFICES:

**EAST: 306 AMHERST ROAD,
PELHAM, MA 01002
413-253-6680**

**WEST: 4517 HARLIN DRIVE,
SACRAMENTO, CA 95826.
916-438-2930
916-438-2935 (F)**

**17150 NEWHOPE STREET
SUITE 1001,
FOUNTAIN VALLEY, CA 92708.
714-546-4411
714-546-4412 (F)**